

Conveen® Standard

en Combi bag (bedside drainage bag / leg bag)

Conveen®

en Leg bag strap

Conveen®

en Bag hanger / stand



Instructions for use

Please read the following instructions carefully.

23343299 Version 1

The Coloplast logo is a registered trademark of Coloplast A/S. All rights reserved. © 2025-11-06

Intended purpose

The urine bag is intended to passively collect urine.

Indications

Urine bags are indicated for patients suffering from urinary incontinence and/or retention.

Warnings

Re-use of the single use product is not recommended as cross contamination may occur, potentially leading to infection.

Reprocessing, washing, disinfection and/or sterilisation may compromise product characteristics, causing additional risk of physical harm or infection to the user.

Cautions

The product is not made with natural rubber latex, however rare contamination with trace amounts of natural rubber latex during manufacturing or packaging may occur, potentially leading to allergic reactions in patients with known or suspected allergies to natural rubber latex.

Information

The bag is non-sterile and is designed for single use.

The bag is designed with a volume capacity of 1500 mL.

The printed volume indicator is only an indicative volumetric measurement scale.

The combi bag is intended to be used both as a bedside bag while in bed and during sleep, and as a leg bag while out of bed and moving about.

This bag is designed to be used in combination with an indwelling or intermittent urinary catheter, alternatively with a urisheath. The bag can also be connected to another urine collection bag to expand the capacity of the overall urine collection system.

The urine bag can also be attached to a Coloplast® urostomy bag. Please refer to instructions for use for the urostomy bag.

The straps can be washed at temperature of 40°C/104°F or lower.

The products are intended to be stored in the box until removed for use, as the box protects the products and the label on the box contains important information like batch code, use-by date and a unique barcode.

Side-effects in relation to the use of urine bags may include skin irritation, distended bladder and urinary tract infection.

Coloplast accepts no liability for any injury or loss that may arise if this product is used in a manner contrary to Coloplast's current recommendations.

Reusable products

Maximum number of allowable reuses for the bag hanger is one use per day for 5 years.

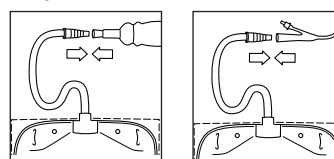
Straps should be replaced when the elasticity weakens.

Storage conditions

Keep away from sunlight and heat.

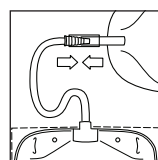
How to use

Preparation



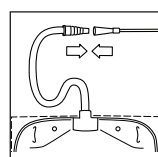
The combi bag can be attached directly to a urisheath or indwelling catheter and be hung at bedside for drainage while in bed and during sleep.

It can also be worn on the leg for drainage while out of bed and moving about.



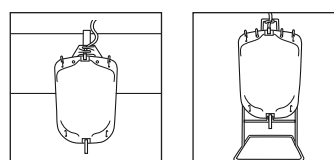
The combi bag can be used to extend the capacity of another leg bag while in bed and during sleep. Connect it to the outlet of the leg bag and hang at bedside.

For overnight linkage the leg bag must be fitted with a flexible outlet tube that accommodates the inlet connector of the combi bag.



Intermittent catheterisation

The combi bag may also be connected to an intermittent catheter for urine collection during intermittent catheterisation.



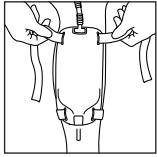
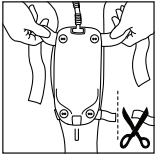
When used as a bedside bag, use a Conveen bag hanger or stand to suspend the bedside drainage bag.

Fit the bag securely on the hanger or stand by inserting the teeth of the hanger or stand in the slits at the top of the bag. Hook the bag hanger onto the bed rail or place the stand on the floor at the bedside.

To ensure optimal drainage, it is important that the bedside drainage bag is positioned lower than yourself when you are lying in bed.

Intermittent catheterisation

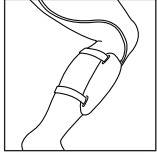
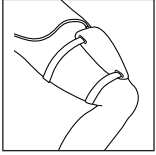
Suspend or place the bag as you find most convenient, making sure the bag is positioned lower than your pelvic area whether you prefer to catheterise sitting, standing or lying down.



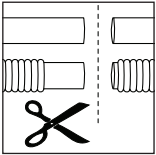
When used as a leg bag, attach the Conveen straps to the bag.

Fit the bag to your leg. Any surplus strap may be trimmed off.

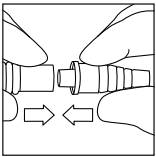
Conveen siliconized strap
Use the longer strap at the top of the bag. If fitting the bag to the calf, wrap the top strap in a figure-of-eight behind and over the knee.



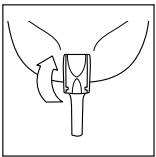
The bag has an inlet tube. When used as a leg bag the length of the tube determines where the bag can be placed on the leg.



You can shorten the tube to your preferred length. Simply cut the tube with scissors at the free end.

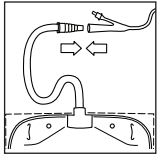
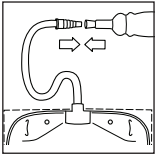


The bag is supplied with a separate inlet connector. Attach the connector to the tube by pushing the thin end of the connector into the tube as far as possible.



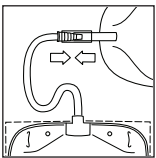
Make sure the outlet tap is closed.

Application



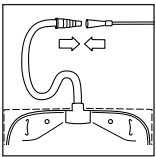
If the connector has a protective cap, remove it.

Attach the connector to the urisheath or indwelling catheter.



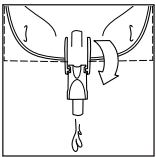
Or attach the connector to the leg bag outlet tube. Open the leg bag outlet tap.

The urinary collecting system is now functional.



Intermittent catheterisation
Attach the connector to the intermittent catheter.

When you begin to catheterise the urine will drain into the bedside drainage bag.



We recommend emptying the bag when it is a little over half full to ensure optimal drainage.

Intermittent catheterisation
Empty the bedside drainage bag after each intermittent catheterisation.

Removal

Disconnect the bag from the urisheath or catheter.

If the combi bag is linked to another leg bag for extra drainage capacity, close the outlet tap of the bag connected to urisheath or catheter. Then disconnect the bags without touching the open end of outlet tube on the bag connected to urisheath or catheter.

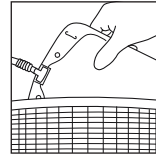
When used at bedside, detach the bag from the hanger or stand.

When used as a leg bag, unfasten the straps and remove the bag from your leg.

Intermittent catheterisation

After completing the catheterisation, disconnect the bag from the intermittent catheter.

Disposal



Change the bag according to local guidelines and recommendations.

The straps and the bag hanger or stand may be reused.

Empty the bag before discarding it.

The product is intended for single use only and should be disposed of in accordance with local guidelines, e.g. with normal household waste.

Do not flush the product down the toilet.

Reporting of incidents

If, during the use of this device or as a result of its use, a serious incident has occurred, please report it to the manufacturer and to your national authority.

Explanation of symbols



Medical device



Indicates that the product is in compliance with European legislation for medical devices



Catalogue number



Use-by date (YYYY-MM-DD)



Batch code



Date of manufacture (YYYY-MM-DD)



Manufacturer



Consult instructions for use



Do not re-use



Non-sterile



Not made with natural rubber latex



Indicates a carrier that contains Unique Device Identifier information



Keep away from sunlight and heat



Recyclable packaging



MR Safe