

en Urostomy bag 2-piece

Ostomy baseplate

Ostomy Care



Instructions for use

Please read the following instructions carefully.

23340386 Version 1

The Coloplast logo is a registered trademark of Coloplast A/S. All rights reserved. © 2021-09-23

Intended purpose

The ostomy bag is intended to passively collect output from a stoma. The adhesive baseplate is attached to the ostomy bag and is intended to adhere to intact skin around the stoma.

Indications

The device is indicated for people with a stoma.

Warnings

Re-use of the single use product is not recommended as cross contamination may occur, potentially leading to local infection.

Reprocessing, washing, disinfection and/or (re)sterilisation may compromise product characteristics, causing additional risk of physical harm or infection to the user.

Cautions

For appropriate use, consult your health care professional before you start using a convex product.

This product is non-sterile and should be used with caution on premature babies or infants receiving incubator care as it may lead to increased risks of infection.

Information

Single use urostomy bag.

The products are intended to be stored in the box until removed for use, as the box protects the products and the label on the box contains important information like batch code, use-by date and a unique barcode.

The device does not have to be removed before an MR scan as it is MR safe.

Coloplast accepts no liability for any injury or loss that may arise if this product is used in a manner contrary to Coloplast's current recommendations.

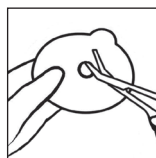
Special storage conditions

Keep away from sunlight.

Store baseplate horizontally.

How to use

Preparation



Cut a hole in the baseplate to fit the exact size and shape of the stoma using a pair of small curved scissors and the cutting guide on the baseplate.

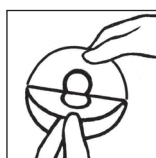
You can use the enclosed stoma measuring guide to measure the size and shape of the stoma.

An exact fit between the hole and the stoma is important to reduce the risk of leakage and skin problems.

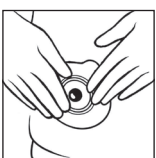


Thoroughly clean the stoma and the surrounding skin area. The skin must be completely dry before application of the baseplate.

Application

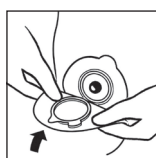


Peel off the protective film from the adhesive.



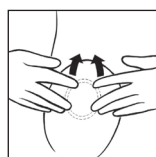
Align the baseplate around the stoma and apply pressure to the baseplate to ensure fast adhesion and a perfect fit between the adhesive and the skin around the stoma.

The adhesive must fit snugly around the stoma. To prevent leakage it is important to ensure a tight seal around the stoma. When applying pressure to the baseplate/bag on the abdomen, begin in the area around the stoma and press the adhesive to the skin. Run a finger all the way around the stoma to ensure that the adhesive seals. Smooth the adhesive down, starting from the stoma and moving outwards to the edges, to ensure that the adhesive has made full contact with the skin.

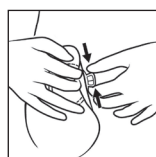


Ensure the baseplate is dry and clean (when cleaning the baseplate only use water).

Make sure that the lock ring is open. Position the bottom of the bag coupling at the bottom of the baseplate coupling.



Press the bag and the baseplate together at the bottom with your middle fingers.



Close the lock ring by pressing the lock together. The bag is securely attached to the baseplate when you hear a 'click'.



The outlet can be hidden in the pocket on the front to make it more comfortable and discreet.

Emptying/Drainage

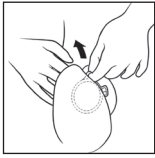


Hold the plug/end of the outlet upwards and squeeze the outer end of the outlet, pull out the plug, and relax your hold on the outlet and then drain the bag. After complete drainage, ensure that the outlet is firmly closed with the plug fully inserted.

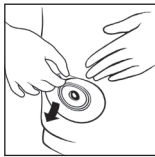
Removal



Remove the bag by opening the lock ring by pressing the small tab with a finger tip.



Hold on to the removal ear and remove the bag by carefully pulling the bag away from the baseplate.



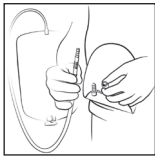
Gently remove the baseplate by pulling the removal ear on the baseplate away from the stomach and roll the baseplate slowly downwards. Apply light pressure on your skin with your free hand to help removal.

Disposal

The product is intended for single use only and should be disposed of in accordance with local guidelines.

Do not flush the product down the toilet.

Bedside drainage bag



For greater security we suggest you use the Coloplast bedside drainage bag, specially designed to connect directly into your urostomy bag. However, urostomy bags can be connected to all types of bedside drainage bags by using the connector supplied. The narrow end of the connector is pushed into the outlet of the urostomy bag and the other end is connected to the bedside drainage bag.

Reporting of incidents

If, during the use of this device or as a result of its use, a serious incident has occurred, please report it to the manufacturer and to your national authority.

Explanation of symbols



Medical device



Indicates that the product is in compliance with European legislation for medical devices



Catalogue number



Use-by date (YYYY-MM-DD)



Batch code



Date of manufacture (YYYY-MM-DD)



Manufacturer



Consult instructions for use



Do not re-use



Indicates a carrier that contains Unique Device Identifier information



Global Trade Item Number



Keep away from sunlight



This way up



Recyclable packaging



MR Safe