

Protective Seal

Ostomy Care



Coloplast A/S  
Hofedam 1  
3050 Humlebaek  
Denmark

### Instructions for use

23325666 Version 1

The Coloplast logo is a registered trademark of Coloplast A/S. All rights reserved. © 2021-01-25

### Intended purpose

Brava Protective Seal is intended to provide a seal between intact peristomal skin and ostomy base plate, thereby protecting the skin against stoma output. The product is designed to fill out cavities/folds in the peristomal skin.

### Warnings

Re-use of the single use product may create a potential harm to the user.

Reprocessing, washing, disinfection and/or sterilisation may compromise product characteristics, causing additional risk of physical harm or infection to the user.

### Cautions

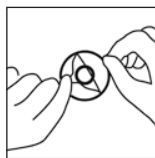
Keep away from sunlight.

### Information

Coloplast accepts no liability for any injury or loss that may arise if this product is used in a manner contrary to Coloplast's current recommendations.

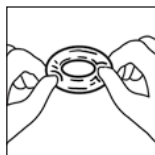
## How to use

### Preparation



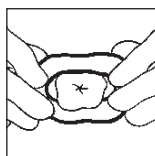
Before applying Protective Seal, ensure that the skin around the stoma is clean and dry.

Remove the product from the blister, and then peel off the protective paper from both sides by holding the removal ears.

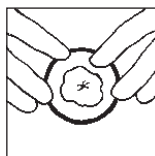


Mould and stretch the product to the desired shape.

### Application



Apply Protective Seal to the skin around the stoma. Adjust the shape again if needed. Mould the product with your fingers so that the edge of the product is securely smoothed onto the skin.



The product can also be applied on the baseplate before applying both to the skin.

If you use a 2-piece ostomy appliance, it is possible to apply Protective Seal directly to the coupling side of the baseplate, to achieve a snug fit around the stoma.

Apply the bag as normal.

### Removal

After usage, gently remove the base plate and Protective Seal from the skin. The product should come off together with the baseplate. However, if there are slight residues left on the skin it does not damage the skin. Nor does it affect adhesion of the next product that is applied.

### Disposal

The product should be disposed of with normal household waste or according to local guidelines.

Do not flush the product down the toilet.

### Reporting of incidents

If, during the use of this device or as a result of its use, a serious incident has occurred, please report it to the manufacturer and to your national authority.

## Symbols



## Explanation of symbols

