

Bedside drainage bag
Bag hanger / stand (sold separately)



Instructions for use

23323173 Version 1

The Coloplast logo is a registered trademark of Coloplast A/S. All rights reserved. © 2020-04-28

Distributed by:

Coloplast Corp.
1601 W. River Rd. N.
Minneapolis, MN 55411 USA
Tel. (888) 726-7872
www.coloplast.us

Intended purpose

The urine bag is intended to passively collect urine.

Indications

Urine bags are indicated for patients suffering from urinary incontinence and/or retention.

Warnings

Re-use of this single use product is not recommended as cross contamination may occur.

Reprocessing, washing, disinfection and/or (re)sterilization may compromise product characteristics, causing additional risk of physical harm or infection to the user.

Information

The bag is designed for single use.

The bag is designed with a volume capacity of 68 oz. (2000 mL).

The printed volume indicator is only an indicative volumetric measurement scale.

The product is not made with natural rubber latex, however rare contamination with trace amounts of natural rubber latex during manufacturing or packaging may occur.

The products are intended to be stored in the box until removed for use, as the box protects the products and the label on the box contains important information like batch code, use-by date and a unique barcode.

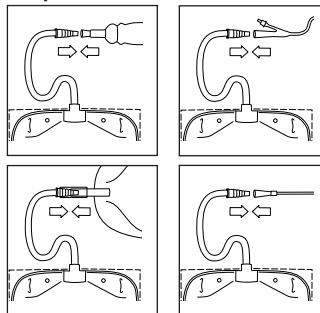
Coloplast accepts no liability for any injury or loss that may arise if this product is used in a manner contrary to Coloplast's current recommendations.

Reusable products

Maximum number of allowable reuses for the bag hanger is one use per day for 5 years.

How to use

Preparation

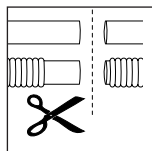


A bedside drainage bag can be attached directly to a urisheath or indwelling catheter.

Or it can be connected to a leg bag for extra drainage capacity during the night. For overnight linkage the leg bag must be fitted with a flexible outlet tube that will accommodate the inlet connector of the bedside drainage bag.

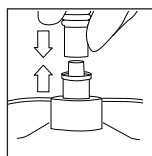
Intermittent catheterization

A bedside drainage bag may also be connected to an intermittent catheter for urinary collection during intermittent catheterization.

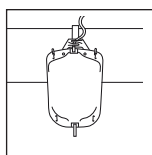


If the tube does not have a pre-attached inlet connector or if the tube itself is not pre-attached to the bag you can shorten the tube to your preferred length. Simply cut the tube with scissors.

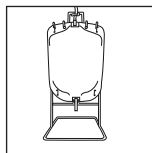
When cutting a corrugated tube, leave as much of the straight section as possible in place. This will ensure a secure connection between tube and connector when mounting the connector.



Attach the tube to the bag by pushing the cut end of the tube firmly into the connection inlet of the bag.



Use a Coloplast bag hanger or stand to suspend the bedside drainage bag.



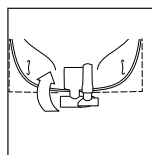
Fit the bag securely on the hanger or stand by inserting the teeth of the hanger or stand in the slits at the top of the bag. Hook the bag hanger onto the bed rail or place the stand on the floor at the bedside.

To ensure optimal drainage, it is important that the bedside drainage bag is positioned lower than yourself when you are lying in bed.

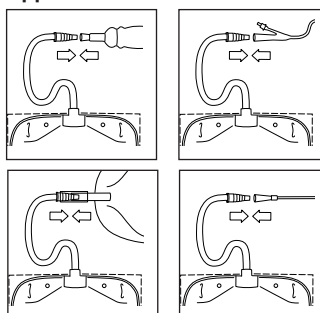
Intermittent catheterization

Suspend or place the bag as you find most convenient, making sure the bag is positioned lower than your pelvic area whether you prefer to catheterize sitting, standing or lying down.

Make sure the outlet tap is closed.



Application



If the connector has a protective cap, remove it. Attach the connector to the urisheath or indwelling catheter.

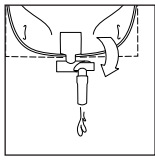
Or attach the connector to the leg bag outlet tube. Open the leg bag outlet tap.

The urinary collecting system is now functional.

Intermittent catheterization

Attach the connector to the intermittent catheter.

When you begin to catheterize the urine will drain into the bedside drainage bag.



We recommend emptying the bag when it is a little over half full to ensure optimal drainage.

Intermittent catheterization

Empty the bedside drainage bag after each intermittent catheterization.

Removal

Disconnect the bedside drainage bag from the urisheath or indwelling catheter.

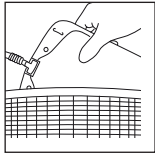
Or, if the bedside drainage bag is linked to the leg bag, close the leg bag outlet tap. Then disconnect the bedside drainage bag. Avoid touching the open end of the leg bag outlet tube.

Intermittent catheterization

After completing the catheterization, disconnect the bedside drainage bag from the intermittent catheter.

Detach the bag from the hanger or stand.

Disposal



Change the bag according to local guidelines and recommendations.

The bag hanger or stand may be reused.

Empty the bag before discarding it.

The bag is intended for single use only and should be disposed of with normal household waste. Do not flush the product down the toilet.

Reporting of incidents

If, during the use of this device or as a result of its use, a serious incident has occurred, please report it to the manufacturer and to your national authority.

Explanation of symbols



Medical device



Indicates that the product is in compliance with European legislation for medical devices



Catalog number



Use-by date (YYYY-MM-DD)



Batch code



Date of manufacture (YYYY-MM-DD)



Manufacturer



Consult instructions for use



Do not re-use



Non-sterile



Indicates a barcode as containing Unique Device Identification



Global Trade Item Number



Keep away from sunlight



Recyclable packaging



Not made with natural rubber latex