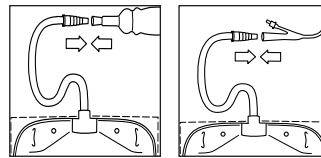
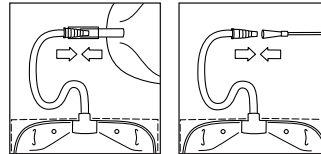


Preparation



A bedside drainage bag can be attached directly to a urisheath or indwelling catheter.



Or it can be connected to a leg bag for extra drainage capacity during the night. For overnight linkage the leg bag must be fitted with a flexible outlet tube that will accommodate the inlet connector of the bedside drainage bag.

Intermittent catheterisation

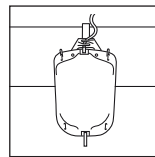
A bedside drainage bag may also be connected to an intermittent catheter for urinary collection during intermittent catheterisation.



Instructions for use

23322749 Version 2

The Coloplast logo is a registered trademark of Coloplast A/S. All rights reserved. © 2020-02-19



Use a bag hanger to suspend the bedside drainage bag.

Fit the bag securely on the hanger by inserting the teeth of the hanger in the slits at the top of the bag. Hook the bag hanger onto the bed rail.

To ensure optimal drainage, it is important that the bedside drainage bag is positioned lower than yourself when you are lying in bed.

Intermittent catheterisation

Suspend or place the bag as you find most convenient, making sure the bag is positioned lower than your pelvic area whether you prefer to catheterise sitting, standing or lying down.

Intended purpose

The urine bag is intended to passively collect urine.

Indications

Urine bags are indicated for patients suffering from urinary incontinence and/or retention of any aetiology.

Warnings

Re-use of the single use product is not recommended cross contamination may occur.

Reprocessing, washing, disinfection and/or (re)sterilisation may compromise product characteristics, causing additional risk of physical harm or infection to the user.

Store the product out of reach of small children and supervise children that may be present while you use the product to avoid risk of strangulation with the tubes and suffocation on small parts that have come lose from the product.

Information

The bag is designed for single use.

The bag is designed with a volume capacity of 2000 mL.

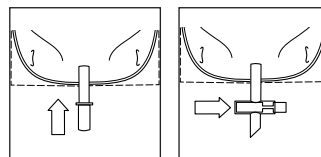
The printed volume indicator is only an indicative volumetric measurement scale.

The products are intended to be stored in the box until removed for use, as the box protects the products and the label on the box contains important information like batch code, use-by date and a unique barcode.

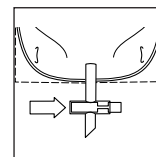
Coloplast accepts no liability for any injury or loss that may arise if this product is used in a manner contrary to Coloplast's current recommendations.

Maximum number of allowable reuses

Maximum number of allowable reuses for the bag hanger is one use per day for 5 years.



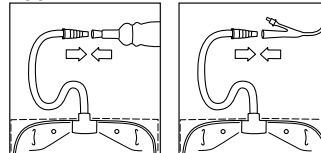
Push-pull outlet



Slide action tap

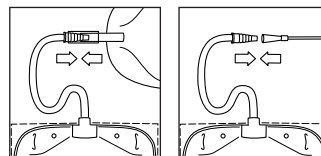
If the bag has an outlet tap, make sure it is closed.

Application



If the connector has a protective cap, remove it.

Attach the connector to the urisheath or indwelling catheter.



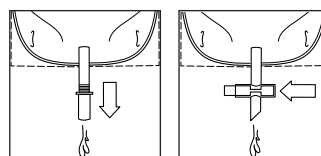
Or attach the connector to the leg bag outlet tube. Open the leg bag outlet tap.

The urine collecting system is now functional.

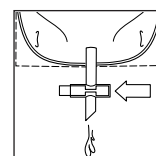
Intermittent catheterisation

Attach the connector to the intermittent catheter.

When you begin to catheterise the urine will drain into the bedside drainage bag.



Push-pull outlet



Slide action tap

We recommend emptying the bag when it is a little over half full to ensure optimal drainage.

Intermittent catheterisation

Empty the bedside drainage bag after each intermittent catheterisation.



Without outlet tap

Removal

Disconnect the bedside drainage bag from the urisheath or indwelling catheter.

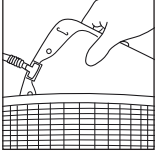
Or, if the bedside drainage bag is linked to the leg bag, close the leg bag outlet tap. Then disconnect the bedside drainage bag. Avoid touching the open end of the leg bag outlet tube.

Intermittent catheterisation

After completing the catheterisation, disconnect the bedside drainage bag from the intermittent catheter.

Detach the bag from the hanger.

Disposal



Change the bag according to local guidelines and recommendations.

The bag hanger may be reused.

Empty the bag before discarding it.

The product is intended for single use only and should be disposed of in accordance with local guidelines, e.g. with normal household waste.

Do not flush the product down the toilet.

Reporting of incidents

If, during the use of this device or as a result of its use, a serious incident has occurred, please report it to the manufacturer and to your national authority.

Explanation of symbols



Medical device



Indicates that the product is in compliance with European legislation for medical devices



Catalogue number



Use-by date (YYYY-MM-DD)



Batch code



Date of manufacture (YYYY-MM-DD)



Manufacturer



Consult instructions for use



Do not re-use



Non-sterile



Indicates a barcode as containing Unique Device Identification



Global Trade Item Number



Keep away from sunlight



Recyclable packaging