

**Female**

Care should be taken when opening and handling the product as the liquid inside may leave stains when in contact with clothing. Otherwise the liquid is harmless.

Coloplast accepts no liability for any injury or other loss that may arise if this product is used in a manner contrary to Coloplast's current recommendations.

Manufacturer: Coloplast A/S 3050 DK  
 Distributed by: Coloplast Corp., 1601 West River Road North  
 Minneapolis, MN 55411 Tel. 1-800-533-0464 www.coloplast.us  
 23322346, V5.0 The Coloplast logo is a registered trademark of Coloplast A/S.  
 © [2020-03] All rights reserved Coloplast A/S, 3050 Humlebaek, Denmark.

Caution: Federal law restricts this device to sale by or on the order of a licensed health care practitioner.

**Warnings**

Reuse of this single use product may create a potential risk to the user. Reprocessing, cleaning, disinfection and sterilization may compromise product characteristics which in turn create an additional risk of physical harm to or infection of the patient.

**Cautions**

Self-catheterization is a common and reliable procedure. However, prior to performing self-catheterization it is important to consult a medical professional for guidance and follow these instructions carefully.

In case of urinary tract infection with symptoms such as fever, discomfort when emptying the bladder, a frequent urge to urinate or blood in the urine, contact your physician/nurse.

If you have been diagnosed with urethral strictures consult your health care professional.

Do not use if package or seal is damaged. Do not re-sterilize.

Keep away from sunlight. Store products horizontally at room temperature and at dry conditions. Exposure to extreme temperatures (-0.4°F / -18°C and up to 140°F / 60°C) for up to 24 hours will not damage the product.

**Indications**

The catheter is sterile and for intermittent use only.

SpeediCath Compact Set is indicated for use by patients with chronic urine retention and patients with a post void residual volume (PVR) due to neurogenic and non-neurogenic voiding dysfunction. The catheter is inserted into the urethra to reach the bladder allowing urine to drain.

This device is intended for females only.

**Information**

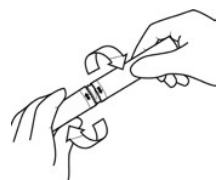
This product is a coated catheter in sterile solution with attached bag.

Complete catheterization without undue delay and remove the catheter upon emptying the bladder.

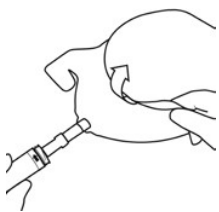
**How to use SpeediCath Compact Set**



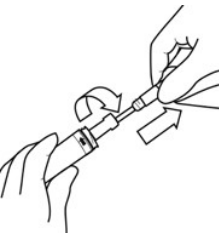
**1 Opening / Preparation**  
 Start by washing your hands and the area around the urethral orifice. It is important to avoid transferring bacteria from your hands to the catheter.



Twist and remove the cover



Unfold the bag



Twist and pull the catheter out



**2 Application / Insertion**  
 Insert the catheter into the urethra until urine starts to flow



**3 Removal**  
 When urine stops flowing, pull the catheter out about 3/8-3/4 in. (1-2 cm). If urine starts flowing again, wait until it stops. Then pull the catheter out 3/8-3/4 in. (1-2 cm) again. When your bladder is empty remove the catheter.

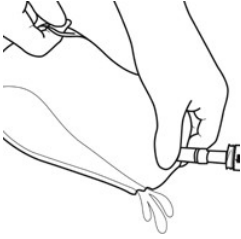


**4 Emptying**  
 Reseal the catheter by twisting it back into the packaging

Open the urine bag by tearing off the tap



Empty the bag into the toilet and dispose the catheter and bag in household rubbish



**Symbol**

	Do Not Use if Package is Damaged
	Consult instructions for use
	Do not re-use
	Use-by date
	Sterilized using irradiation
	Batch code
	Date of manufacture (YYYY-MM-DD)
	Manufacturer
	Keep away from sunlight
	Prescription use only
	Recyclable packaging
	This way up
	Global Trade Item Number