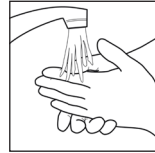
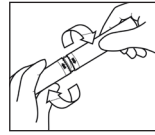


How to use

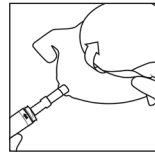
Preparation



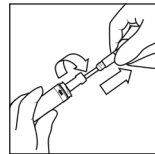
Start by washing your hands and the area around the urethral opening. It is important to avoid transferring bacteria from your hands to the catheter.



Twist and remove the cover.

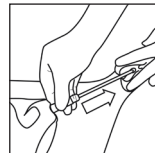


Unfold the bag.

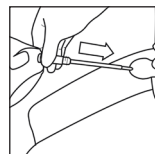


Twist and pull the catheter out.

Insertion of the Catheter

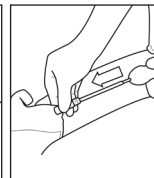


Females: Insert the catheter into the urethra until urine starts to flow.



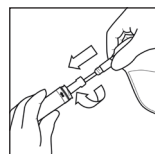
Males: Lift the penis with one hand to straighten out the urethra. Insert the catheter into the urethra until urine starts to flow.

Removal

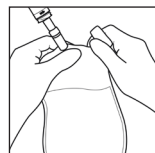


Male + female: When urine stops flowing, pull the catheter out about 1-2 cm. If urine starts flowing again, wait until it stops. Then pull the catheter out 1-2 cm again. When your bladder is empty remove the catheter.

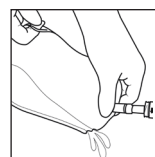
Emptying/Drainage



Reseal the catheter by twisting it back into the packaging.



Open the urine bag by tearing off the tap.



Empty the bag before discarding the catheter and bag.

Disposal

The product is intended for single use only and should be disposed of in accordance with local guidelines, e.g. with normal household waste.

Do not flush the product down the toilet.

Symbols



Do not use if package is damaged.



Instructions for use

23320485 Version 1

The Coloplast logo is a registered trademark of Coloplast A/S. All rights reserved.© 2017-12-14

Indications

Sterile urinary catheter for intermittent use.

Information

Coloplast accepts no liability for any injury or loss that may arise if this product is used in a manner contrary to Coloplast's current recommendations.

The catheter can be exposed to extreme temperatures (below 0°C and up to 60°C) for up to 24 hours without the catheter being damaged.

This product is a coated catheter in sterile solution with attached bag.

The solution in which the catheter is stored is harmless. However, the solution may stain.

Sterilised using irradiation (R).

Cautions

Contact your health care professional before you perform self-catheterisation for the first time.

Catheterisation should take place as quickly as possible after opening the package. The catheter should always be removed when the bladder has been emptied.

Contact your health care professional if you:

- experience symptoms such as fever, discomfort when emptying the bladder, a frequent urge to urinate or blood in the urine.
- have been diagnosed with urethral strictures
- experience that the catheter does not drain the bladder the way you are used to

Do not use if package is damaged.

Keep away from sunlight.

Store at room temperature and at dry conditions

Store in a horizontal position.

Warnings

Re-use of the single use product may create a potential harm to the user. Reprocessing, washing, disinfection and/or sterilisation may compromise product characteristics, causing additional risk of physical harm or infection to the user.