

Bedside drainage bag Bag hanger / stand



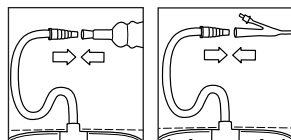
Instructions for use

23317945 Version 1

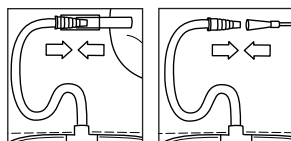
The Coloplast logo is a registered trademark of Coloplast A/S. All rights reserved.©
2015-12-03

How to use

Preparation



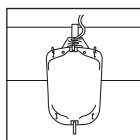
A bedside drainage bag can be attached directly to a urisheath or indwelling catheter.



Or it can be connected to a leg bag for extra drainage capacity during the night. For overnight linkage the leg bag must be fitted with a flexible outlet tube that will accommodate the inlet connector of the bedside drainage bag.

Intermittent catheterisation

A bedside drainage bag may also be connected to an intermittent catheter for urinary collection during intermittent catheterisation.



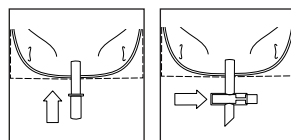
Use a bag hanger to suspend the bedside drainage bag.

Fit the bag securely on the hanger by inserting the teeth of the hanger in the slits at the top of the bag. Hook the bag hanger onto the bed rail.

To ensure optimal drainage, it is important that the bedside drainage bag is positioned lower than yourself when you are lying in bed.

Intermittent catheterisation

Suspend or place the bag as you find most convenient, making sure the bag is positioned lower than your pelvic area whether you prefer to catheterise sitting, standing or lying down.



Push-pull outlet

Slide action tap

If the bag has an outlet tap, make sure it is closed.

Indications

Urine collection bag

Information

Coloplast accepts no liability for any injury or loss that may arise if this product is used in a manner contrary to Coloplast's current recommendations.

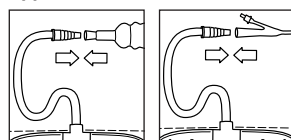
Cautions

Do not use if package is damaged.

Warnings

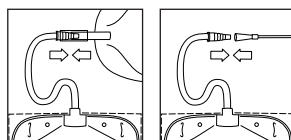
Re-use of the single use product may create a potential harm to the user. Reprocessing, washing, disinfection and/or sterilisation may compromise product characteristics, causing additional risk of physical harm or infection to the user.

Application



If the connector has a protective cap, remove it.

Attach the connector to the urisheath or indwelling catheter.



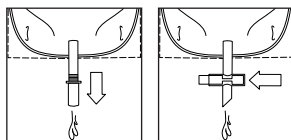
Or attach the connector to the leg bag outlet tube. Open the leg bag outlet tap.

The urinary collecting system is now functional.

Intermittent catheterisation

Attach the connector to the intermittent catheter.

When you begin to catheterise the urine will drain into the bedside drainage bag.



Push-pull outlet

Slide action tap

We recommend emptying the bag when it is a little over half full to ensure optimal drainage.

Intermittent catheterisation

Empty the bedside drainage bag after each intermittent catheterisation.



Without outlet tap

Removal

Disconnect the bedside drainage bag from the urisheath or indwelling catheter.

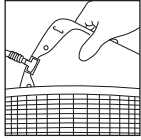
Or, if the bedside drainage bag is linked to the leg bag, close the leg bag outlet tap. Then disconnect the bedside drainage bag. Avoid touching the open end of the leg bag outlet tube.

Intermittent catheterisation

After completing the catheterisation , disconnect the bedside drainage bag from the intermittent catheter.

Detach the bag from the hanger or stand.

Disposal



Change the bag according to local guidelines and recommendations.

The bag hanger or stand may be reused.

Empty the bag before discarding it.

The product is intended for single use only and should be disposed of in accordance with local guidelines, e.g. with normal household waste.

Do not flush the product down the toilet.