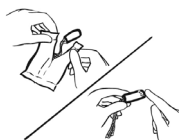


How to use Peristeen Anal Plug

The anal plug can be used by people who are faecal incontinent or suffer from involuntary passing of air (flatulence). It functions as an effective barrier to faeces in the rectum.



**1. Preparation**

Smear a small amount of Peristeen Gel on the tip of the Peristeen Anal Plug. Other lubricants may be used instead.



**2. Insertion**

Insert the Peristeen Anal Plug gently into the anus, just as you would a conventional suppository. Ensure that the entire Peristeen Anal Plug is inserted into the rectum, just inside the anal sphincters. Leave the gauze hanging outside of your body.



**3. Use**

The Peristeen Anal Plug is now correctly positioned in the rectum and will quickly expand to full size as the film dissolves in the body's natural warmth and moisture. It may be left in the rectum for up to 12 hours.



**4. Removal**

The Peristeen Anal Plug is removed from the rectum by gently pulling the gauze moulded into the Peristeen Anal Plug. Removing the anal plug will not activate the emptying reflex, so there is no need to hurry. A fresh Peristeen Anal Plug may be inserted immediately after removal of the old one. After use, put the Peristeen Anal Plug into a waste bin - NOT into the toilet.

**Note:** The Peristeen Anal Plug must be removed no later than 12 hours after insertion. If you experience difficulties removing the Peristeen Anal Plug, you must contact your physician.



**Instructions for use**

23314464 Version 1  
The Coloplast logo is a registered trademark of Coloplast A/S. All rights reserved.© [2013-03]

**Indication**

The Peristeen Anal Plug is intended as a barrier to faeces in the rectum.

**Contraindication**

- Peristeen Anal Plug must not be used, if you suffer from:
  - Hemorrhoids (3rd and 4th degree)
  - Anal stenosis

**Information**

Coloplast accepts no liability for any injury or loss that may arise if this product is used in a manner contrary to Coloplast's current recommendations.  
The anal plug takes a little time to get used to if you have normal sensation in the rectal area. Often this is not the case for people who have reduced or impaired sensation. Faeces must be firm and shaped.  
The anal plug is available in two sizes. Which size to choose cannot be determined beforehand. Try both sizes and choose the one that is most effective.  
Some people using the anal plug on a regular basis will find that the plug is pushed out of the rectum from time to time. There is no apparent reason for this reaction, but experience shows that the same user can resume using the plug with success after a short plug-free period.

**Caution**

This product should not be used without assessment by your health care professional. Contact your health care professional before you use Peristeen Anal Plug for the first time, as professional guidance in the use of the plug is vital.  
The anal plug should not be used if you are suffering from diarrhoea.  
If placed in the mouth, the Peristeen Anal Plug will expand and may cause choking. Remove the anal plug when you feel the urge to defecate. If you have no sensation in the rectal area and do not feel the urge to defecate, changing plug at regular intervals is recommended.  
The Peristeen Anal Plug must be removed no later than 12 hours after insertion. If you experience difficulties removing the Peristeen Anal Plug, you must contact your health care professional.  
If you repeatedly experience discomfort when using the Peristeen Anal Plug, stop using it and contact your health care professional.  
Keep out of reach of children.

**Warning**

Re-use of the single use product may create a potential harm to the user. Reprocessing, washing, disinfection, and sterilisation may compromise product characteristics, causing additional risk of physical harm to or infection of the user.